

EMS SQL Angel

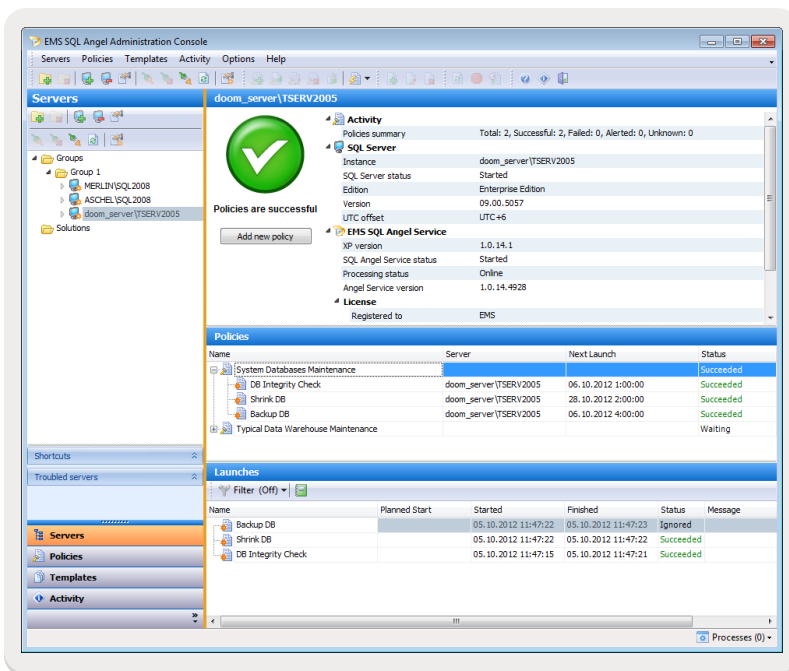
Become more productive than ever before!

SQL Angel is an easy-to-use and powerful tool to perform backup and restore tasks on the whole set of SQL Servers in your company. A backup compression mechanism helps to greatly save disk space (up to 95%) significantly reducing the backup execution time (up to 80% compared with native tools). Along with backup, restore and log shipping tasks, SQL Angel performs many other regular maintenance tasks for SQL Server such as updating statistics, re-indexing, shrinking databases, checking database integrity and others.

Why SQL Angel?

To provide companies with effective and accessible information, databases administrators' top-priority tasks are to create, set up and monitor SQL Server database maintenance tasks. Without a scheduled maintenance plan, it is impossible to achieve the highest productivity, fault tolerance and make sure all databases in the company are coordinated. A standard maintenance task list includes backup, restoring, log shipping, checking database integrity, index defragmentation, data structure optimization and many other tasks which, if executed regularly, significantly increase capability of maintained systems.

As the number of servers, databases, and the processed information volumes are constantly increasing, administrators need new and easily adjusted solutions for effective database maintenance. SQL Angel allows you to drastically reduce the time spent on deploying and monitoring SQL Server maintenance tasks, and, as a result, it allows to considerably reducing total IT infrastructure costs.



KEY BENEFITS

SAVING DISK SPACE

Having an integrated compression mechanism, SQL Angel allows you to save up to 95% of disk space during backup operations. You can take advantage of this benefit regardless of SQL Server edition you use.

SAVING BACKUP EXECUTION TIME

The compression level selection allows you to find the best compromise solution between backup speed and size. At the same time the backup execution time can be saved up to 80%, compared with native tools, due to lower load on the disk subsystem. This allows you to reduce size of processing windows to execute maintenance tasks.

SECURITY

To protect backups from unauthorized access you can encrypt them using one of three encryption algorithms (AES (rijndael), Blowfish, DES). This feature is available regardless of SQL Server edition you use.

SAVING DEPLOYMENT TIME

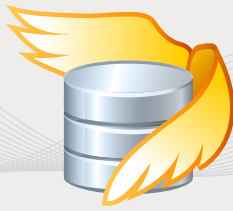
A flexible mechanism of policies and templates allows you to create an unlimited number of sets (patterns) of necessary maintenance tasks, and then to easily deploy these sets to multiple SQL servers. This allows you to save significant time spent on both the initial deployment of maintenance policies and on their further modifications.

FAST LOG SHIPPING

A user friendly wizard helps you to configure all necessary log shipping parameters much faster and with fewer errors. The Log Shipping Wizard offers a number of additional settings such as compressing and encrypting the shipped logs.

SAVING TIME ON INVESTIGATING AND RESOLVING ISSUES

The Policy engine allows you to immediately get information about an unfinished on any server maintenance task. SQL Angel provides you with the detailed information about the received error. Moreover, you can immediately start the unfinished task and view its execution result. Having information about all maintenance task launches in SQL Angel, you can receive information about issues more quickly and take corrective measures, thereby reducing idle (inefficient) time of the system.



EMS SQL Angel

continues

Become more productive than ever before!

KEY FEATURES

- ▶ Compressing backup files (up to 95%, on any SQL Server version)
- ▶ Reducing backup execution time up to 4 times (on any SQL Server version)
- ▶ Backup encryption (on any SQL Server version)
- ▶ Easy-to-use log shipping process
- ▶ Ability to perform 7 types of maintenance tasks including backup, log shipping, re-indexing, updating statistics, etc.
- ▶ Policy engine to quickly deploy maintenance tasks to multiple servers
- ▶ Centralized monitoring of policies on multiple servers using the user-friendly GUI console
- ▶ A high-performance multi-threaded backup

MAINTENANCE INCLUDED

Software maintenance is a cost-effective and comprehensive service that includes technical support, software updates, and many other benefits. Within software maintenance service, you automatically receive the newest versions of EMS software upon their release at no additional cost. This allows you and your company to keep up with the latest software technology developments, take advantages of usability improvements, and manage software licenses more easily. SQL Angel already includes one year of Maintenance for free!

ABOUT EMS

EMS /Electronic Microsystems/ is an Information Technology Company with software development as one of its activity fields. As an innovative, customer-focused company and the developer of leading database administration tools, EMS is the choice of thousands of companies in more than 90 countries. EMS customers include companies of all sizes from vast development teams in the world's largest organizations to progressive one-person shops. We strive to deliver exceptional quality and value to our clients, helping them to succeed in their development initiatives.

ADDITIONAL INFORMATION

For more information about EMS SQL Angel visit <http://www.sqlmanager.net/products/mssql/angel>

SYSTEM REQUIREMENTS

HARDWARE

SQL ANGEL SERVICE

- ▶ 600-MHz or higher Pentium II-compatible processor; 1GHz or faster processor recommended
- ▶ 512 MB RAM or more; 1024 MB or more recommended
- ▶ 70 MB of available HD space for program installation

SQL ANGEL ADMINISTRATION CONSOLE

- ▶ 600-MHz or higher Pentium II-compatible processor; 1GHz or faster processor recommended
- ▶ 512 MB RAM or more; 1024 MB or more recommended
- ▶ 120 MB of available HD space for program installation
- ▶ Super VGA (800x600) or higher-resolution video adapter and monitor; Super VGA (1024x768) or higher resolution recommended
- ▶ Microsoft Mouse or compatible pointing device

SOFTWARE

- ▶ Microsoft .NET Framework 3.5
- ▶ Microsoft Windows 2000
- ▶ Microsoft Windows 2000 Server
- ▶ Microsoft Windows XP
- ▶ Microsoft Windows 2003 Server
- ▶ Microsoft Windows Vista
- ▶ Microsoft Windows 2008 Server
- ▶ Microsoft Windows 7
- ▶ Microsoft Windows 7 x64
- ▶ Microsoft Windows 8
- ▶ Microsoft Windows 8 x64
- ▶ Microsoft Windows 2012 Server

SUPPORTED SQL SERVER VERSIONS

- ▶ SQL Server 2000
- ▶ SQL Server 2005
- ▶ SQL Server 2008
- ▶ SQL Server 2012

SQL Manager.net[™]
EMS® Database Management Solutions

EMS Database Management Solutions, Inc.

Tel/Fax: 1-646-362-2260

Toll-free for U.S. & Canada:

1-866-SQL-4-YOU
(1-866-775-4968)

web: www.sqlmanager.net

e-mail: sales@sqlmanager.net